

HOT WIRE FOAM CUTTERS

Operating and Safety Instructions

IMPORTANT Operating and Safety Instructions Carefully Read Prior to Use

Safety precautions must always be followed to reduce the possibility of personal injury or property damage.

The cutting ability of the tool is dependent upon the temperature of the Nichrome Wire. The wire temperature is regulated by the dial on the transformer. The longer the length of wire, the higher the dial must be set on to heat the wire. Care should be taken not to overheat the wire and not to set the dial up to a level that will overheat the transformer.

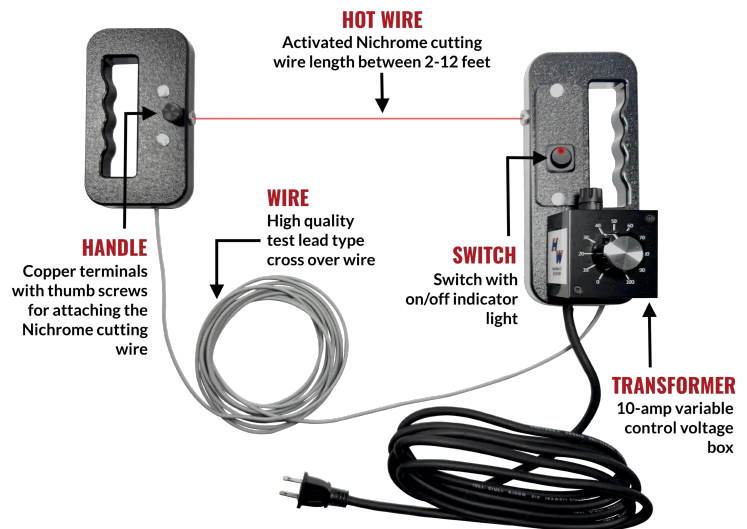
It is recommended that the cutter be powered off after each cut to prevent damage to the transformer. If the cutter is operated too long at a high setting the wire will glow red hot and may break and/or damage the transformer rendering the tool useless.

Failure to carefully follow the operating and safety instructions may cause damage to the tool and/or injury to the user. Foam Cutters, LLC accepts no responsibility for any damage or injury resulting from failure to follow instructions or misuse of the tool.

This tool is expressly made to cut EPS and other foam material. Properly used, the tool can cut blocks as large as 36"H x 48"W x 96"L along the 48" width simply by adjusting the length of the cutting wire and the heat setting on the transformer. The tool has been designed to be used by two persons; each person holding one of the cutter handles.

Do not allow the wire to come into contact with metal or any surface that will conduct electricity as this is dangerous and may cause damage to the tool or personal injury. If the cutting wire touches any metal or conductive surface it could cause the fuse to blow or the transformer to malfunction. If this should happen, only replace the fuse using a 10 amp fast blowing ceramic type fuse. Replacement fuses can typically be purchased at Home Depot.

Because the tool conducts electrical current, the Cutter should not be used around water or in excessively damp areas. The Nichrome wire conducts electricity and the safety of the user is a primary concern. Like any other tool, misuse of the tool may cause the tool to malfunction or could cause injury to the user. Extra care should be used around any flammable or combustible material as the cutting wire, when hot, could start a fire if it comes in contact with certain materials.



HOW TO USE THE HOT WIRE FOAM CUTTER

- Make sure the cutter is unplugged, the transformer is set to zero and the switch is set to the off position prior to inserting the wire.
- Determine the length of the cut that you are making and then fasten the necessary length of wire (2ft. minimum) to the handles. Use only the wire provided or other Nichrome Wire as any other wire will not work and will damage the transformer. If you purchase wire, use ONLY 24 GA - 0.021" diameter Nichrome wire.
- When the cutting wire is in place, plug the Cutter in, turn on the switch and SLOWLY adjust the dial on the transformer until the wire starts to glow.
- The length of the wire will determine the dial setting on the transformer to allow the wire to heat sufficiently to easily cut the foam.
- After each cut, switch the unit off. The wire will cool down in a few seconds and this will keep the transformer from overheating and minimize wire breakage.

**THIS CUTTER HAS BEEN INSPECTED AND TESTED PRIOR TO SHIPPING.
ANY DAMAGE OR INJURY CAUSED BY NOT FOLLOWING THESE INSTRUCTIONS
IS NOT THE RESPONSIBILITY OF THE CUTTER MANUFACTURER OR RESELLER.**

Foam Cutters, LLC

Fort Worth, TX 76110
www.foamcuttersllc.com
(817) 447-8674